



SIMbox Version 5.6.2 Release Notes

What's New in Version 5.6.2	2
SIMbox Graphic Engine	3
Ability to Render Video Camera to Image	3
Enhanced Side-View Solution	3
SIMbox Simulation	4
SCORM Conformance for Simulation Sessions	4
VSync Coupling	4
New Free-Flying Camera	4
Instructor Station	5
Ability to Reposition Aircraft for Runway Training	5
Ability to Slew an Aircraft	6
SIMbox Toolkit	7
Agent Editor	7
Local Parameter Center	7
Ability to Outline Subparts	8
Ability to Smooth Camera Movement	8
Ability to Auto-pan Cockpit Camera	9
Ability to Define Success and Completion Status	10
Scenario Editor	11
Ability to Define Runway Conditions	11
Object Editor	12
Full Version Numbers for Content Packages	12
Ability to Compile Content as Software Updates Package ..	12
Console Editor	13
Define Circular Gesture for Knobs	13
SDK	13
Ability to Upgrade Entire Solution to VS2010	13
Management Systems	14
Learning Management System (LMS)	14
Ability to Export and Print a Feedback Form	14
Support Open Office Documents and Presentations	15
Ability to Take Notes for Documents and Presentations ...	15
Ability to Display Resources as Nested Items	15
Ability to Duplicate an Agent in the LMS	16
Ability to Create ICBT Sessions	16
LMS Server	17
Server Backup and Restore Options	17
Auto-Deployment of Content Packages	17
Performance Improvements	17
Training Management System (TMS)	18
Conflict Alerts when Moving Existing Activities	18
Ability to Add an Ad-hoc Course Activity	18
Ability to Add Non-Working Days to Calendar	19
Technology Upgrade	20

Version Statement

SimiGon is proud to release SIMbox version 5.6.2.

This version continues to focus on creating a new benchmark for organizations seeking to increase training efficiencies, Operational Readiness and decrease costs.





1. What's New in Version 5.6.2

SimiGon is committed to continually improving the SIMbox application based on your feedback. I am proud to announce the release of version 5.6.2 with many of the features based on your inputs.

SIMbox technology enables us to provide complete and innovative training solutions to all levels of the organization. Version 5.6.2 offers a more advanced, comprehensive and integrated Learning & Content Management System (LCMS) and Training Management System (TMS). Simulations now have full SCORM conformance.

While the product continues to be deployed at major programs worldwide, SimiGon continues to lead the training industry with innovative and cost effective solutions. In the past year we have deployed very cost-effective and competitive, dome-based systems worldwide. This version introduces the Interactive Computer Based Training (ICBT) Session to provide a web-based, interactive simulation to trainees, and many more new capabilities.

With this version, we've also focused on improved performance, stability and many bug fixes.

I am eager to understand your needs and challenges concerning SIMbox. We always look to improve our services to our loyal partners and customers. Through our ongoing communications, I want to learn more about the business scenarios you were able to resolve and those challenges you are still facing.

I would like to take this opportunity to thank all our partners out there. You are working at the front to deliver the revolution of the training industry. We could not have done so without you, thank you for your partnership. Thank you for the amazing feedback we've received this year. I'm looking forward to our mutual challenges in the future.



Koby Ben Yakar

VP Products

+1 (407) 362-7834 Ext. 530



2. SIMbox Graphic Engine

2.1. Ability to Render Video Camera to Image

The graphics engine in SIMbox Version 5.6.2 supports the ability to render video camera to image. Implemented as an API that allows developers to render a video camera frame to an image buffer.

2.2. Enhanced Side-View Solution

The SIMbox graphics engine boasts an enhanced and improved Side View Solution. The Side View technology has been greatly improved in terms of features and stability to support full-dome displays in a scalable solution.



The Side View Solution Supporting a Full-Dome Display



3. SIMbox Simulation

3.1. SCORM Conformance for Simulation Sessions

This version adds full SCORM conformance for SIMbox Simulation sessions. SIMbox Simulation sessions can be imported into any other SCORM compliant Learning Management Systems.

3.2. VSync Coupling

Version 5.6.2 adds the ability to force the frame cycle to match the display system VSync rate. When used in conjunction with external motion-model libraries this feature can ensure a near-real-time behavior.

3.3. New Free-Flying Camera

A new free-flying camera feature is added to the simulation in version 5.6.2. The Free Fly camera view allows you to fly above the terrain at certain speed, altitude and direction without being connected to a simulation entity, as shown in this video.



3.4. Instructor Station

3.4.1. Ability to Reposition Aircraft for Runway Training

Version 5.6.2 lets the instructor reposition an aircraft on predefined (and configurable) points along landing and takeoff patterns. The instructor can select the airport by International Civil Aviation Organization (ICAO) and runway stored in the NavAids database. The instructor can reposition an aircraft entity to a pre-configured position, altitude, heading and airspeed, allowing the student to gain experience by practicing specific segments of the landing and take-off patterns.

This video demonstrates the new Airport Reposition feature.



3.4.2. Ability to Slew an Aircraft

A new feature allows the instructor to slew an entity during a Distributed Mission Training (DMT) session, either by relative or global coordinate system. The instructor can slew (slide) an aircraft/helicopter entity to move it to a new position, altitude, heading and airspeed.

Essentially the instructor uses this function to fast-forward the aircraft-entity's position without affecting the rate of simulation session. For example, rather than wait for the aircraft to taxi to the runway, the instructor can save time by slewing the aircraft to the head of the runway.

This video shows the new Entity Slewing feature.

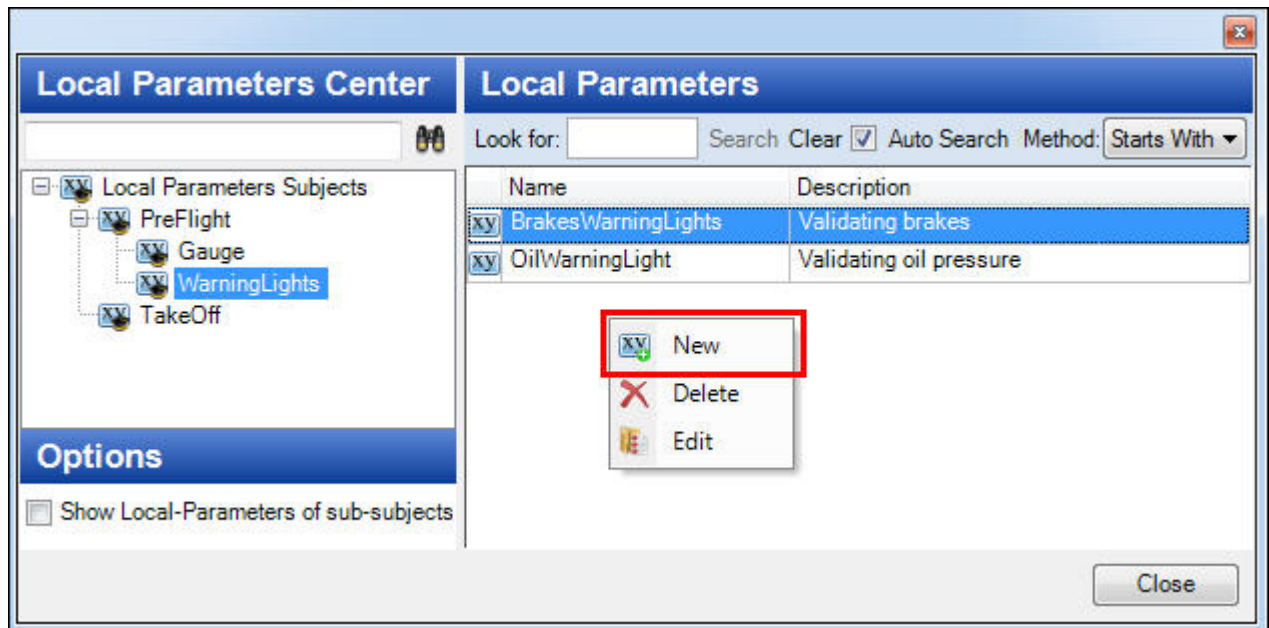


4. SIMbox Toolkit

4.1. Agent Editor

4.1.1. Local Parameter Center

The version 5.6.2 Agent Editor improves efficiency by organizing the Local parameters in a dedicated center, similar to the Objectives Center. This should improve usability by enabling searching and storing local parameters in a folder structure.



The Agent Editor Showing the Local Parameters Center



4.1.2. Ability to Outline Subparts

The Agent Editor in this version adds the ability to highlight and outline subparts in cockpit and external models. This video shows the new feature.

4.1.3. Ability to Smooth Camera Movement

The Agent Editor in version 5.6.2 adds the ability to use the last path point of a camera recording in order to smooth out the movement. This feature can also be set by a global property to cause previously recorded camera movements to run smoothly. This video shows the smooth camera movement.



4.1.4. Ability to Auto-pan Cockpit Camera

In this version the Agent Editor gains the ability to auto-pan the cockpit camera to show focal points in order to avoid the need to record camera movement prior to showing the focal point. This feature can also be set by a global property to cause previously-set focal points to use this feature thus avoiding the need to edit the existing agents. This video shows the auto-pan feature.



4.1.5. Ability to Define Success and Completion Status

The Agent Editor in version 5.6.2 adds the ability to define success and completion status independently when the agent requests an end to the session. Click the **Session End** button from the Agent Editor toolbar to set up the options for ending a simulation session. Each Session End has a specific status (such as Passed); therefore, you will probably create at least two for each agent with an end item (for example: Passed and Failed).

Session End

Session summary

Grade: 95

Completion: Complete Incomplete

Success: Passed Failed

End message

Display End Message

Message: Session Terminated. Click OK to exit simulation.

Enable Continue Session (Yes-Terminate, No-Continue)

OK Cancel

The Agent Editor Session End Properties Showing Completion and Success Status



4.2. Scenario Editor

4.2.1. Ability to Define Runway Conditions

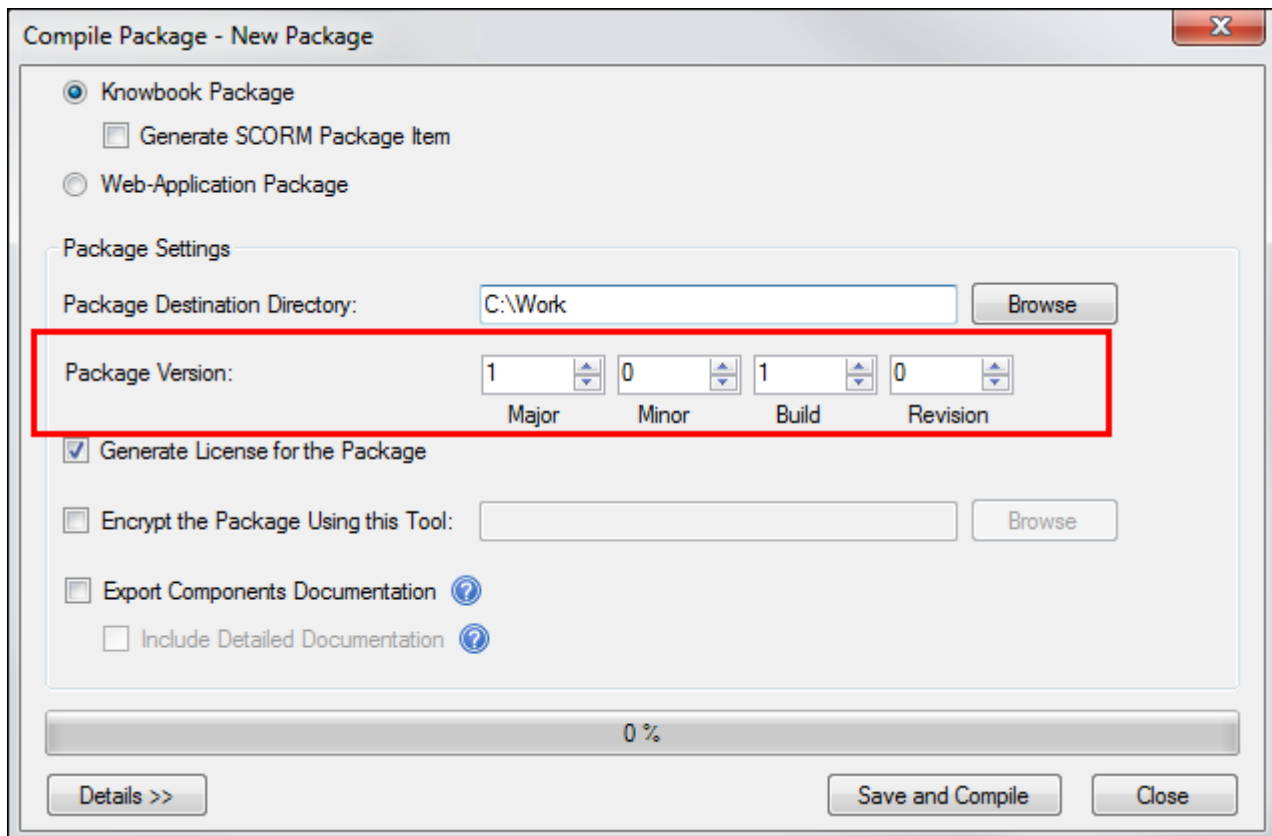
Version 5.6.2 introduces the ability to define landing conditions on runways, either global or by ICAO and runway. Setting the landing conditions to snow, rain or ice in conjunction with the severity affects the runway visual as well as aircraft handling on ground while taking off and landing. This video shows the Airport Reposition feature.



4.3. Object Editor

4.3.1. Full Version Numbers for Content Packages

This version introduces full version numbers for Content Packages, in the format <major>.<minor>.<build>.<revision>. The full version numbers replace the old numeric index.



The Package Compiler Showing the Full Version Numbers

4.3.2. Ability to Compile Content as Software Updates Package

Version 5.6.2 introduces the ability to compile a content package as a software updates package.

The SIMbox Software Updates server is a system-wide capability to deploy content packages automatically. In line with the SIMbox Software Updates server, the SIMbox version 5.6.2 Package Editor compiles content packages with a new file-system structure, making it easier to deploy the content to the student computer.



4.4. Console Editor

4.4.1. Define Circular Gesture for Knobs

A new feature introduced with version 5.6.2 is the ability to define that knobs rotate in a circular mouse or touch-screen gesture rather than linear gesture. This video shows the new circular-gesture feature.

4.5. SDK

4.5.1. Ability to Upgrade Entire Solution to VS2010

Version 5.6.2 adds the ability to upgrade an entire solution from VS2005 to VS2010.



5. Management Systems

5.1. Learning Management System (LMS)

5.1.1. Ability to Export and Print a Feedback Form

Version 5.6.2 adds the ability to export/print a feedback form.

The screenshot shows a PDF document titled "[51702ed4-678a-4e8fc96e23b71]_Feedback Form.pdf" in Adobe Acrobat Professional. The form content is as follows:

Instructor : admin@knowbook.com
 Student : [Feedback User]

	Events	
	Event 1 Default	Satisfaction Value
Task	Default	Default
Read and Sign	25	50
Score	65	65
Pass	80	75

Grade: 0
 Success Status: Passed
 Completion Status: Completed
 Remarks:
 Remarks Type: Positive
 Good work!
 Remarks Type: Positive

The Feedback Form in Printable PDF Format



5.1.2. Support Open Office Documents and Presentations

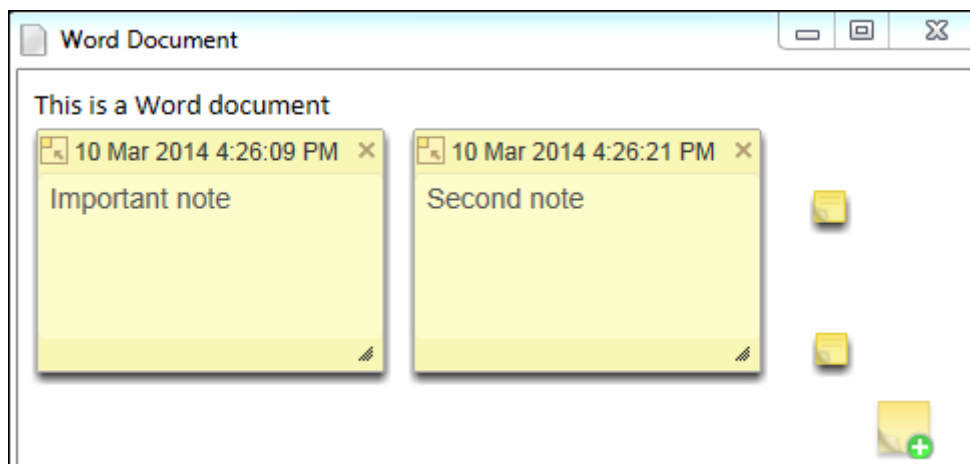
This version adds support for Open Office documents and Open Office presentations.

5.1.3. Ability to Take Notes for Documents and Presentations

A new feature in this version is the ability to take notes for documents and presentations. You can add notes, minimize them and drag them to a different place. The notes are saved when you close the learning item (document or presentation). You will be able to see the notes later, even though the WebAccess.

A note can be added to the following items that have been published from SIMbox to the trainee:

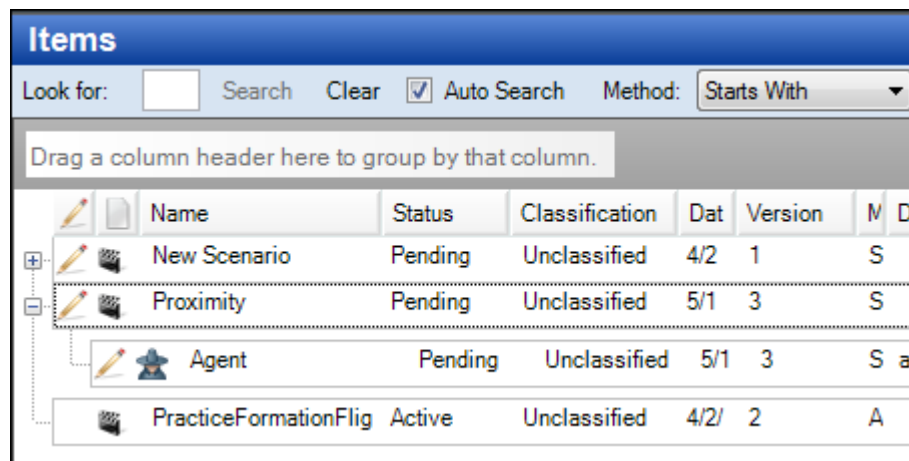
- Microsoft Word or OpenOffice document
- OpenOffice presentation
- Any simple HTML file (must be HTML5 or XHTML compliant)



A Word Document Showing Multiple Notes, Icons of Minimized Notes, and the Add Note Icon

5.1.4. Ability to Display Resources as Nested Items

A new feature in the SIMbox Learning Management System (LMS) displays simulation resources as nested items in the Knowledge Center. Now you can easily see all the simulation resources (Agents, Sound Files, Documents, etc.) related to each simulation lesson in a tree view.



The Items Pane Showing the Nested Resource View



5.1.5. Ability to Duplicate an Agent in the LMS

Version 5.6.2 provides the ability to duplicate an agent in the LMS.

5.1.6. Ability to Create ICBT Sessions

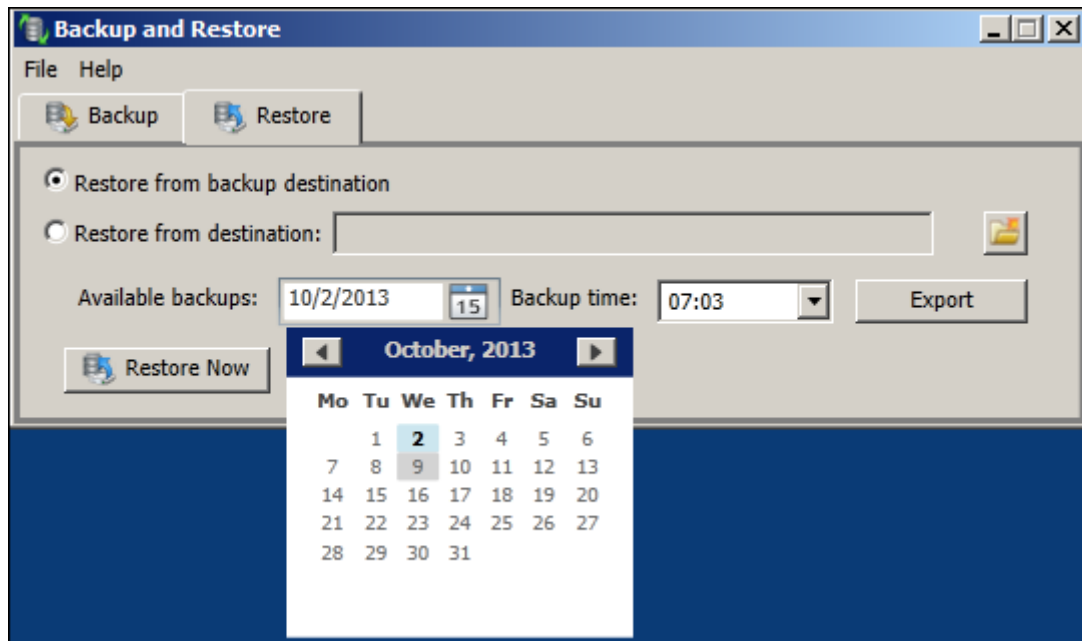
Version 5.6.2 introduces the Interactive Computer Based Training (ICBT) Session capability to integrate an interactive simulation session in a web browser within a text which provides some theory. A good example for the use of the ICBT Session would be a lesson that focuses on a specific instrument view in the cockpit, as shown in the following video.



5.2. LMS Server

5.2.1. Server Backup and Restore Options

This version provides powerful ability to backup and restore the server, either manually or according to a predefined maintenance plan.



The Restore Tab Showing the Day in the Calendar with Available Backups

5.2.2. Auto-Deployment of Content Packages

Version 5.6.2 provides the ability to use the software updates mechanism to auto-deploy content packages.

5.2.3. Performance Improvements

Major performance improvements have been introduced to the SIMbox Server in version 5.6.2.

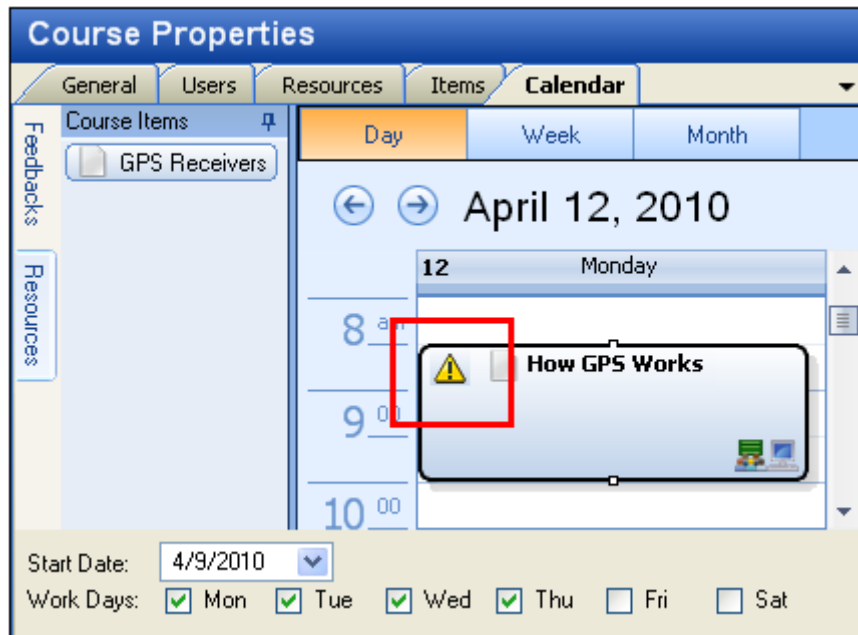
The Learning and Content Management System (LCMS) boasts major performance improvements - with the responsiveness of the LCMS server and the user experience on the client application of the LCMS. Giving the end-user a faster and much more fluent interaction with the LCMS client.



5.3. Training Management System (TMS)

5.3.1. Conflict Alerts when Moving Existing Activities

The Training Management System in version 5.6.2 adds the ability to show a conflict alert when moving an existing activity in the course center. An alert (yellow triangle and exclamation mark) icon indicates that an existing activity is scheduled on the calendar with a specific resource, and that resource is occupied by another activity (different course). This is a warning that the resource is allocated twice.



A Conflict Alert Warning that a Resource is Allocated Twice

5.3.2. Ability to Add an Ad-hoc Course Activity

A new feature in version 5.6.2 is the ability to add an ad-hoc activity to a course. Ad-hoc course activities let you insert non-LMS activities into the course schedule (like Actual flights, SIM trainings, etc.) with the ability to provide feedback to these activities. All course information is stored on the LMS Server and can be queried from the reports.

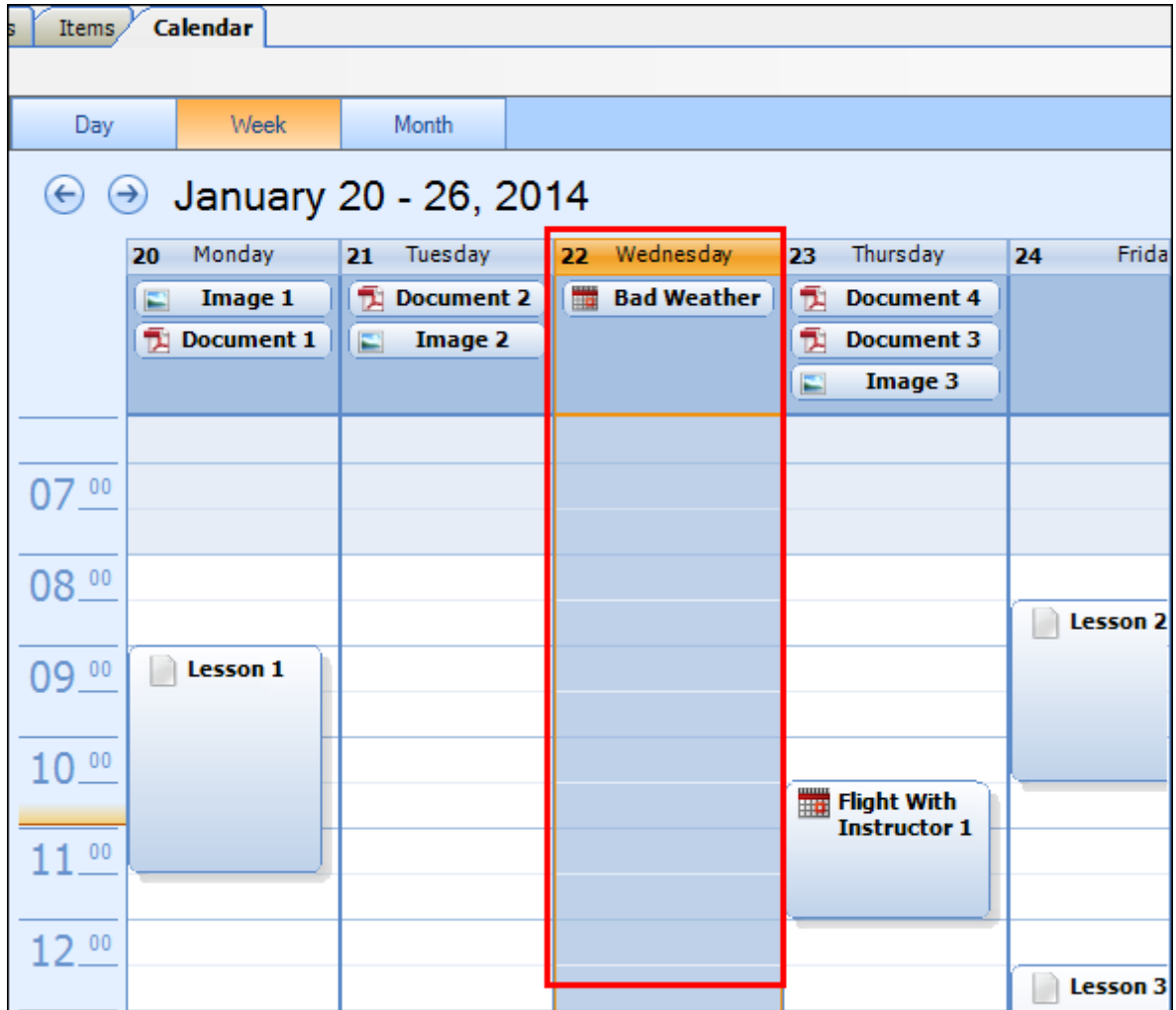
The *ad-hoc course activity* is represented in the Calendar of the Course Center and the Today page by this icon:





5.3.3. Ability to Add Non-Working Days to Calendar

This version lets the course instructor add a non-working day on the calendar in order to shift the schedule one day forward. For example, a planned training flight was cancelled because bad weather does not permit flying. Inserting a Non-Working Day will shift the scheduled course activities forward to the next-available working day.



The Course Properties, Calendar tab Showing the Non-Working Day Added for Bad Weather



5.4. Technology Upgrade

SIMbox version 5.6.2 supports:

- i. Microsoft Office 2013
- ii. Microsoft Windows 8.1
- iii. Microsoft Windows Server 2012
- iv. Microsoft SQL Server 2012